



The Watch Hill Conservancy



Welcome & Thanks

Deborah Lamm

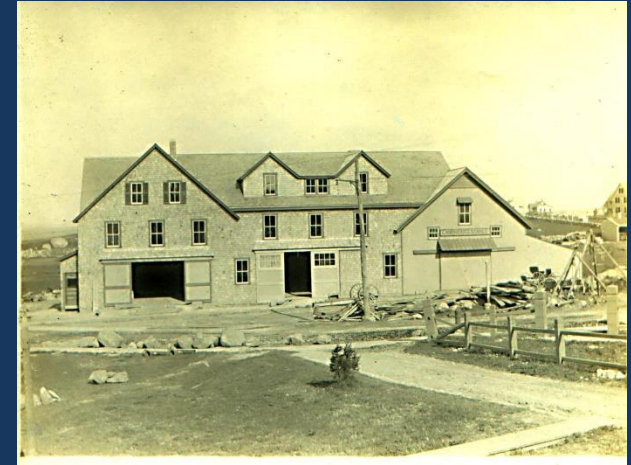
Students
URI Faculty

Our Team

Jocelyn Lahey ED
Janice Sassi, Napatree Manager
Pete August, Science Advisor, Board Member
Stakeholder Committee
Science Advisors



LANPHEAR LIVERY



(GHU-Burdick)





The Watch Hill Conservancy



- 20 Years Old
- Mission
 - Preserve Community Character
 - Manage Napatree Point
 - Support a Vibrant Bay Street
 - Inform the Community



**LANPHEAR
LIVE!**

*Society, History,
Nature, Technology*

Summer — 2019
The Chaplin & Barnes Reading Room
One Bay Street Center — Watch Hill
Free Admission

July 14 — Sunday — 6:00 PM
An Evening of Magic — With Team Members of New York Yacht Club's Challenger for the 36th America's Cup Yacht Race
*Featuring the designer in sailboat design & engineering:
American Magic Team, New York Yacht Club
(co-sponsored by the Watch Hill Yacht Club)*


July 29 — Monday — 6:00 PM
Fresh From the Antarctic
*The JORDIS Revolution's expedition to Iceberg Alley — March-May 2019
Mario Garmworthy, Outreach Officer*

August 5 — Monday — 6:00 PM
Wild Weather in RI: Our New Normal And Why
*Extreme weather is soon becoming our new normal
David Valle, NOAA, National Weather Service*

August 12 — Monday — 6:00 PM
How Vulnerable Are We?
*Sea level rise and storm surge in Westerly
Bryan Oakley, Eastern Connecticut State University
Teresa Crean, Rhode Island Sea Grant*

August 26 — Monday — 6:00 PM
Narragansett to Napatree: Archaeological Sites Revealed by Superstorm Sandy
*Hurricane Sandy exposed many new archaeological sites along our shore
Timothy Ives, RI Historical Preservation & Heritage Commission*

Sponsored by:
THE WATCH HILL CONSERVANCY & THE LANPHEAR LIVERY
www.thewatchhillconservancy.org
www.lanphearlivery.org







PLANNING FOR A RESILIENT WATCH HILL



What are Climate Change Impacts to Watch Hill?
Why are They Happening – the Science?
What is at Risk?
How Can We Adapt?



RESOLUTION BY THE COMMUNITY OF WATCH HILL, RHODE ISLAND

ON ADAPTING TO SEA LEVEL RISE AND STORM SURGE

APPROVED APRIL 9, 2019

WHEREAS, the village of Watch Hill, by nature of its low elevation and proximity to the sea is extremely vulnerable to rising seas and surge caused by storms, and

WHEREAS, sea level rise is an undeniable fact in Rhode Island as evidenced by long-term trends recorded by NOAA tide gauge stations in the region, and

WHEREAS, NOAA predicts sea levels to rise approximately 3 feet by 2050 and possibly over 9 feet by 2100, and

WHEREAS, even a modest storm that has a 10% chance of occurring at any time will bring a surge of 6 to 9 feet and will be devastating to Watch Hill; and

WHEREAS, nuisance tides now occur on a regular basis and cause flooding of our





MAJOR CONCERNS

NAPATREE





MAJOR CONCERNS

FIRE DISTRICT PROPERTIES



Watch Hill Fire District
Chartered 1901





MAJOR CONCERNS

COMMERCIAL DISTRICT





MAJOR CONCERNS FORT ROAD FLOODING





PRIORITIES



IMMEDIATE CONCERN

Fort Road Flooding
Yacht Club, Napatree, Beach Club,
Cabanas

ADAPT TO 3 FOOT SLR SCENARIO

Bay Street Commercial Area
Transportation
Parking
Utilities

OTHER CHALLENGES

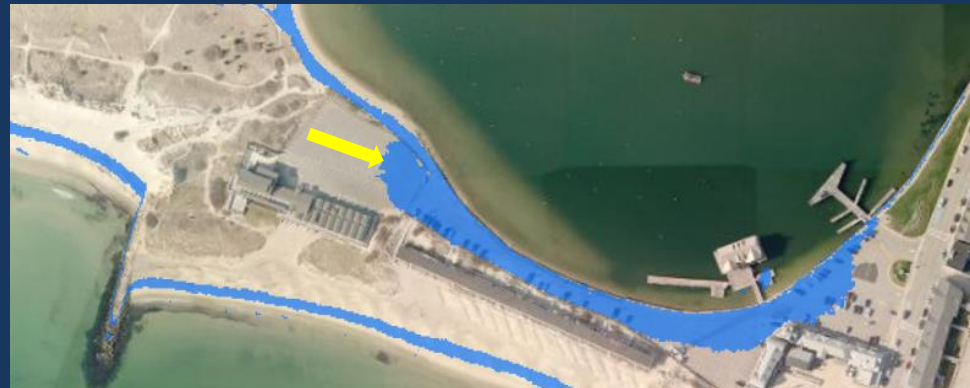
Septic System Failures
Transportation
One Bay Street Parking Flooding

AFTER THE NEXT BIG STORM

Rebuild?
Retreat?
Elevate?
Buy-outs?
Financing?



What Do We Know?



STROMTOOLS MODELS

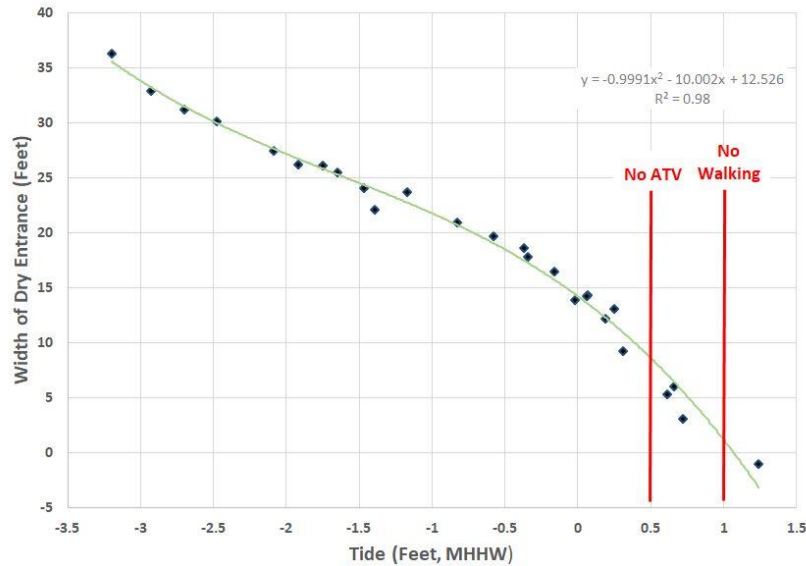
They are accurate
We are at risk



What Do We Know?

Risk Thresholds

Napatree Entrance Dry Width (Ft) Versus Tide State



Frequency of Nuisance Tides

		Days That Exceed This Tide Per Year			
	Feet Above MHHW	2019	2018	2017	2016
No Dry Access					
Napatree	$\geq 1.0'$ MHHW	37	45	50	24
Yacht Club	$\geq 0.8'$ MHHW	74	71	73	37
No ATV on Napatree	$\geq 0.5'$ MHHW	121	136	143	86



WHAT DO WE KNOW?



RTK GPS Elevations on Fort Road
& Napatree