

Planning for a Resilient Future for Watch Hill



A Community Initiative





Planning Session

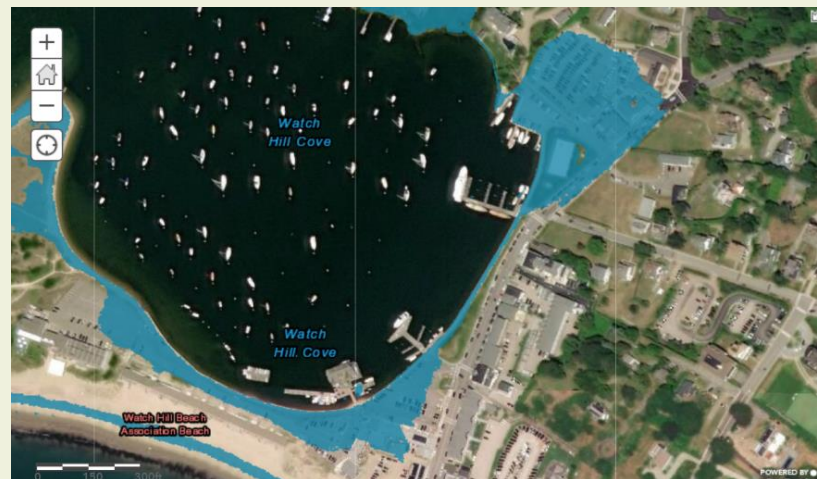
- Welcome
 - *Deborah Lamm, WHC*
- Self Introductions among participants
- News
 - *New content in web archives, Jocelyn*
 - *Upcoming events, Jocelyn*
 - *Student projects, Janice*

<https://thewatchhillconservancy.org/initiatives/planning-for-a-resilient-future/slr-surge-archives/>



Goal for the Day

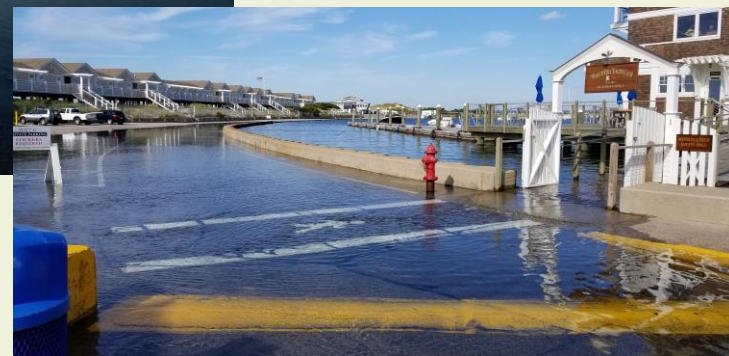
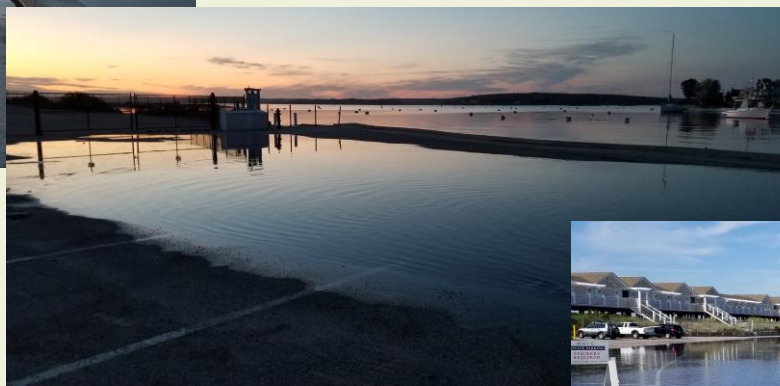
- Begin development of a list of possible actions to mitigate short-term and mid-term challenges
 - Short-term = now
 - Mid-term = 2050 with 3 feet SLR
- Resource list





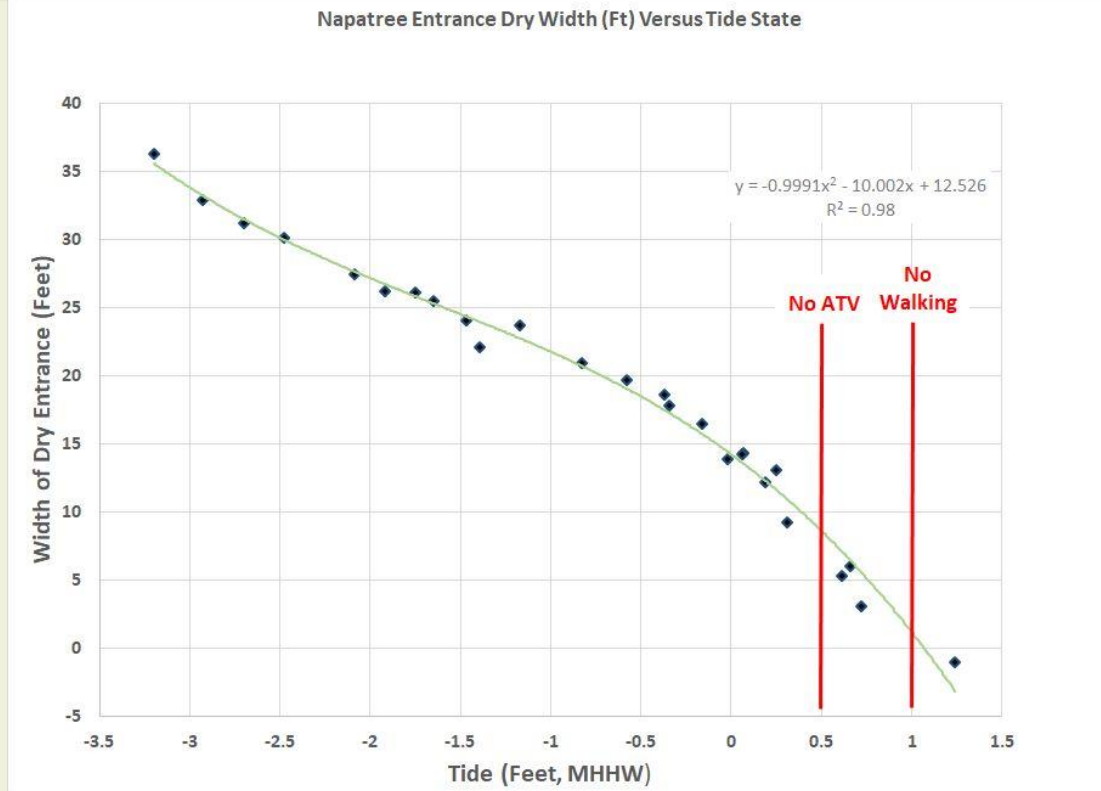
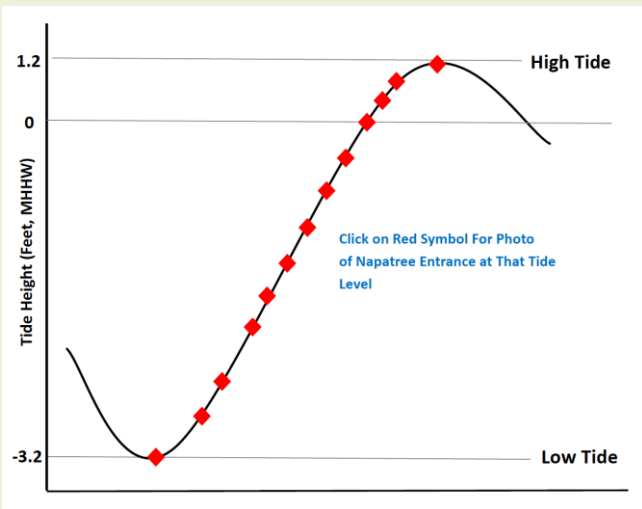
Short-term Challenges

- Fort Road Flooding
 - Access to Beach Club, Yacht Club, Napatree





What are Tide Level Thresholds



Flooding Frequency	Feet Above MHHW	Days Exceeding			
		2019	2018	2017	2016
NTPCA Access	>=1.0' MHHW	37	45	50	24
Yacht Club Access	>= 0.8' MHHW	74	71	73	37
ATV Access	>= 0.5' MHHW	121	136	143	86

Mid-Term Actions



Planning for a Resilient Future for Watch Hill

Our Rolodex – People and Firms



**Experts
Engineers
Planners**



Thank You!



- Working Group Members
- WH Fire Station
- WHC Staff

Next Meeting

March 14

9:00 AM to 11:00 AM

Melissa Cote – Case Studies

More Discussion